

5" Inset Lights

## 5" INSET LED-LIGHT 24VDC SEMI FLUSH

The 5" Inset LED-Light Semi Flush is designated as an omnidirectional visual navigation aid for heliports. It is used on structures located on on- or offshore and vessels.

### Key Features

---

- Steady or discrete dimming
- Low propulsion
- Version with reduced inset diameter available
- No fogging
- IR capability optional available
- 100'000h service lifetime due to optimized electronics and thermal management
- Safety extra-low voltage compliant
- Enhanced surge current protection
- CE certified
- Protection Class IP68 (IEC69598-1)

### Design Concept

---

- Compact design
- Corrosion and UV resistant materials
- Optimized light output due to patented optics concept
- Maximum resistance against intrusion of liquid, dust and mechanical shocks due to fully sealed optics and electronics.

### Purpose

---

- Touch Down and Lift Off Area Light
- Final Approach and Take Off Area Light
- Flight Path Alignment Light
- Flight Path Alignment Guidance Light
- Perimeter Light
- Aim Point Light
- Helicopter Taxiway Edge Light
- Multi Purpose Light (Warning)



### Referred Standards

The 5" Inset LED-Light 24VDC Semi Flush complies with the following industry regulations:

- ICAO Annex 14 Vol 2. Heliports Edition 5/ 2020
- ICAO Doc 9157 Aerodrome Design Manual Part 4 Edition 4/ 2004
- ICAO Doc 9261 Heliport Manual Edition 4/ 2020
- EASA CS-HPTDSN Issue 1/ 2019
- CAA CAP 437 Standards for Offshore Helicopter Landing Areas Version 8.2/ 2021
- CASA CAAP 92-2 Guidelines for the establishment and operation of onshore Helicopter Landing Sites/ 2014
- FAA EB 98 Infrared Specifications for Aviation Obstruction Light - Compatibility with Night Vision Goggles (NVGs)/ 2017
- FAA EB 87 Heliport Perimeter Light for Visual Meteorological Conditions/ 2012
- FAA AC 150/5390-2C Heliport Design/ 2012

## Product Specifications

### Mechanical Data

Height	Above / Below Flange Front Side	6.1mm / 37.2mm
Diameter	Upper / Lower Flange	120mm / 90mm or 84mm
Weight	0.65kg	
Packing Dimensions	190 X 190 X 160mm	
Gross Weight	0.9kg	
Material	Optic	Solid PUR, UV-resistant
	Flange	Aluminum anodized
Protection Class	IP68 (IEC69598-1)	
Recommended Mounting	4x M5x8 V4A countersunk head screws	

### Electrical Data

Operating Voltage	24VDC $\pm$ 6V	
Power Consumption	Idle (without / with IR)	0.3W / 0.5W
	Blue (without / with IR)	5.3W / 5.5W
	Green (without / with IR)	9.6W / 9.9W
	Red (without / with IR)	9.6W / 9.9W
	White (without / with IR)	5.3W / 5.5W
	White 100cd (without / with IR)	9.6W / 9.9W
	Amber (without / with IR)	9.6W / 9.9W
	Surge Protection	8/20 $\mu$ s
		10kA 1 time
1.2/50 $\mu$ s		10kV 10 times
Power Cable	Length	40cm with ferrules
	Material	PUR
	Diameter (coated)	$\varnothing$ 6mm, 3x 0.75mm <sup>2</sup>
	Wire Assignment	Red: +24V
		Blue: 0V
	Dim 9.5V - 0.5V	

## Product Specifications

### Illuminating Data

Color	Blue	CIE X0.14 Y0.07
	Green	CIE X0.17 Y0.71
	Red	CIE X0.70 Y0.30
	White	CIE X0.34 Y0.37
	Amber	CIE X0.40 Y0.41
Luminosity	Blue	5cd
	Green	35cd
	Red	20cd
	White	35cd /100cd
	Amber	35cd
Dimming	Visible	Steadily 0-100% / Discrete 0, 10, 30, 100%
	Infrared	Not dimmable, continuous on
Infrared Option	Wavelength	850nm
	Radiant Intensity	20mW/sr, CW, 15-60°
	Wattage	120mW

### Referred Standards

ICAO Annex 14 Vol 1. Aerodrome Design and Operation Edition 8/ 2018

FAA Engineering Brief 67D Light Sources others than Incandescent and Xenon/ 2012

IEC TS 61827 Electrical Installations for Lighting and Beacons of Aerodrome/ 2004

### Environmental Condition

Operating Temperature	-40°C to +55°C
Storage Temperature	-40°C to +85°C
Solar Radiation Resistance	1kW/m <sup>2</sup> , superimposed with temperature

### Service Life

Service Lifetime	> 100'000h
------------------	------------

### Accessories

8-5" Adaptor Ring (2IL5-AR-85)

5" Shallow Base (2IL5-SB)

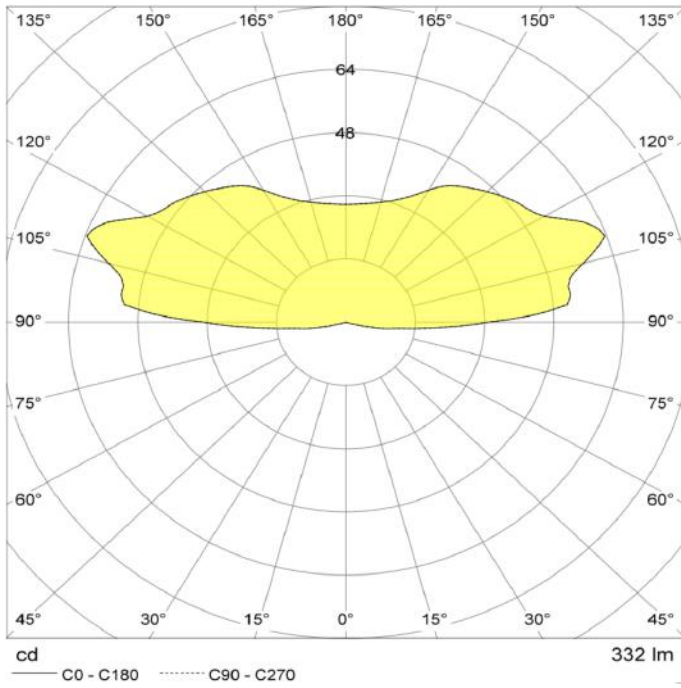
BATTCon Heliport Control System

M5x8 V4A countersunk head screws

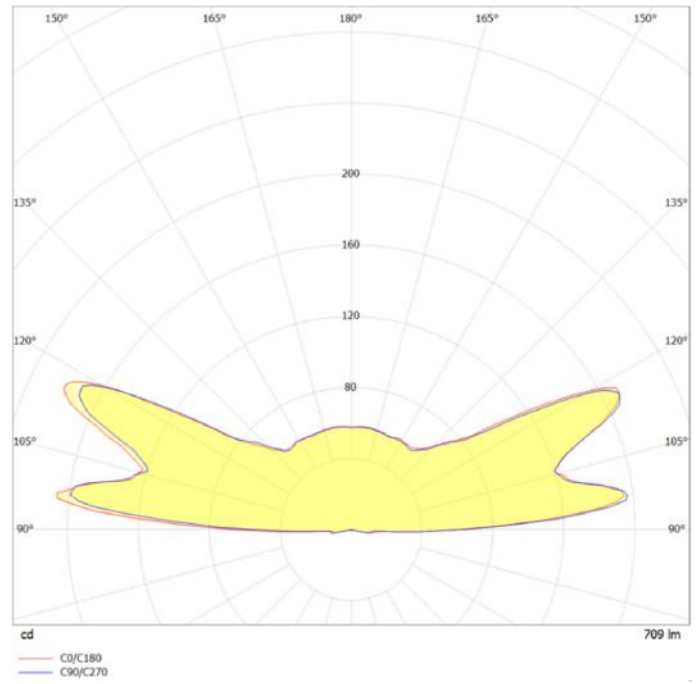
90x3mm O-Rings

Gel Closure

### Light Distribution

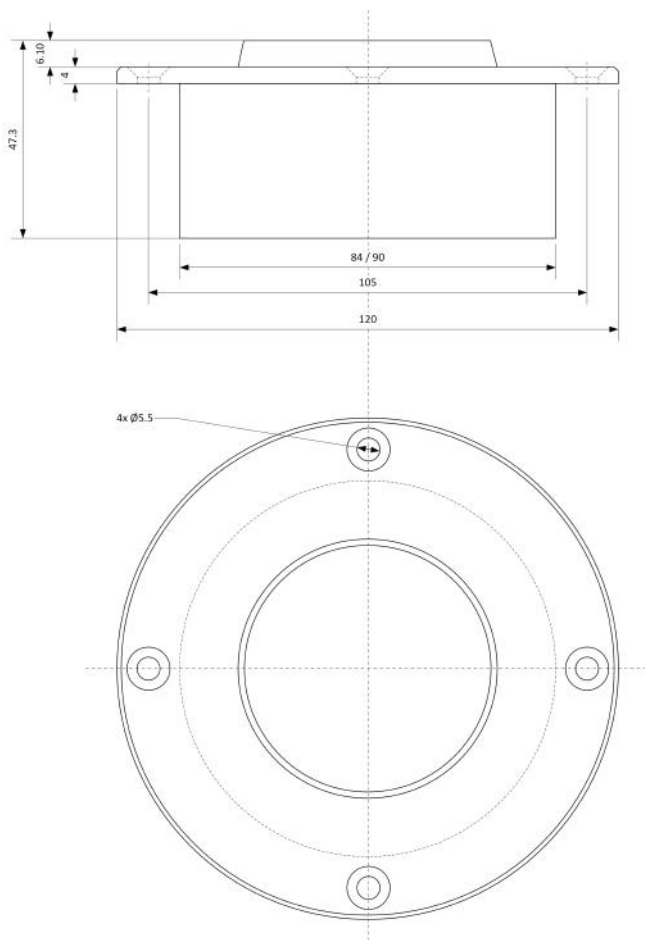


2IL5-SF-24-A-0-G (Application: TLOF)

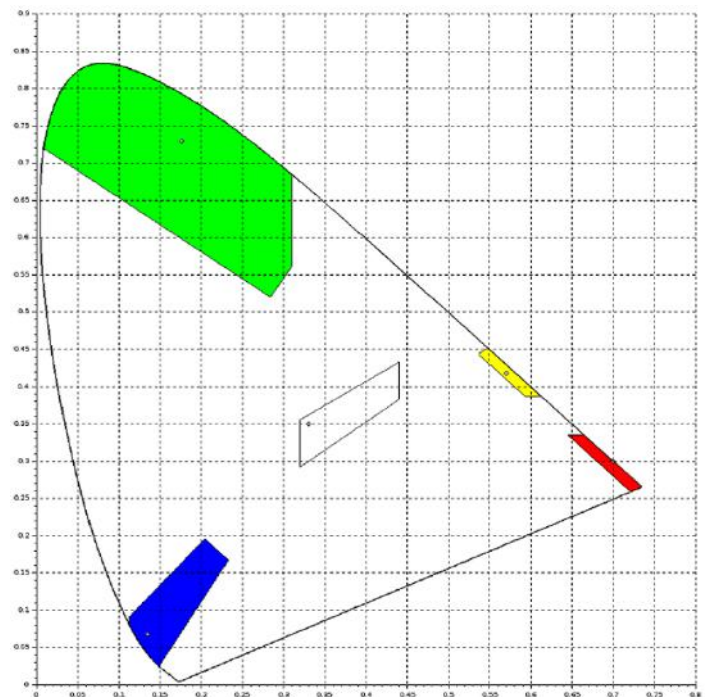


2IL5-SF-24-A-0-W1 (Application: FATO)

### Dimensions



### Chromaticity



## Product Variants and Order Code

Order Code	Diameter		Color						IR Option
	84mm	90mm	Blue	Green	Red	White	White 100cd	Amber	NV Gen.
2IL5-SF-24-A-0-B		x	x						
2IL5-SF-24-A-0-B-NVG		x	x						x
2IL5-SF-24-A-0-G		x		x					
2IL5-SF-24-A-0-G-NVG		x		x					x
2IL5-SF-24-A-0-R		x			x				
2IL5-SF-24-A-0-R-NVG		x			x				x
2IL5-SF-24-A-0-W		x				x			
2IL5-SF-24-A-0-W-NVG		x				x			x
2IL5-SF-24-A-0-W1-NVG		x					x		
2IL5-SF-24-A-0-W1-NVG		x					x		x
2IL5-SF-24-A-0-Y-NVG		x						x	
2IL5-SF-24-A-0-Y-NVG		x						x	x
2IL5-SF-84-24-A-0-B	x		x						
2IL5-SF-84-24-A-0-B-NVG	x		x						x
2IL5-SF-84-24-A-0-G	x			x					
2IL5-SF-84-24-A-0-G-NVG	x			x					x
2IL5-SF-84-24-A-0-R	x				x				
2IL5-SF-84-24-A-0-R-NVG	x				x				x
2IL5-SF-84-24-A-0-W	x					x			
2IL5-SF-84-24-A-0-W-NVG	x					x			x
2IL5-SF-84-24-A-0-W1-NVG	x						x		
2IL5-SF-84-24-A-0-W1-NVG	x						x		x
2IL5-SF-84-24-A-0-Y-NVG	x							x	
2IL5-SF-84-24-A-0-Y-NVG	x							x	x

---

**Imprint**

---

Adress	BATT Suisse GmbH Sonnentalstrasse 8 8600 Dübendorf Switzerland
--------	---

E-Mail	info@batt-suisse.ch
--------	---------------------

Telephone	+41 43 333 81 57
-----------	------------------

Website	www.batt-suisse.ch
---------	--------------------

Published	19.01.2022
-----------	------------

Copyright	BATT Suisse GmbH reserves the right to change technical data and details at any point in time. Errors may occur. All rights reserved. Publication, copying, distribution, exhibition, representation and/or reproduction in any form or utilization are explicitly prohibited without prior approval by BATT Suisse GmbH.
-----------	---

---